

Stella Nova Mitts



Fancy fingerless mitts with very long cuffs. Knitted from charts using only 2 color strands at a time.

Sizing

One size. Fits a medium sized hand. Finished measurements: 12 inches from cuff to finger opening. The cuffs alone are 6 inches long. Laying flat they measure 3 ¼ inches across knuckles.

Materials

All yarns are Knit Pick Palette 100% wool, Fingering weight:

Cornmeal (MC)	92 yds
Caper	66 yds
Mist	51 yds
Serpentine	20 yds
Black	46 yds

Needles/Gauge

Size 3 dpns, Size 2 dpns

Gauge with size 3 needle is: 7 sts per inch in the round in pattern.

Other Supplies

Yarn needle. Stitch markers. Scrap yarn.

Instructions

For both Left and Right mitten cuff: With size 3 needles and MC, C.O. 56 sts, PM, join in the round.

Row 1: k all sts

Row 2: p all sts

Row 3: k all sts

Row 4: p all sts

Row 5: k all sts



Start Chart A, working chart 2 times per round. (56 sts) After completing the Chart A, work 1 round with MC as such: k1, k2tog, k26, k2tog, k25. (54 sts)

Switch to Size 2 needles and begin Chart B repeating the 2 stitches to end of row creating the 1X1 corrugated ribbing. After completing Chart B, knit 1 row plain with MC.

From here on, the Left and Right are constructed differently. For the Right mitten you will work the charts in this order: C then E (with D inserted in E). For the Left mitten you will work the charts in this order: E (with D inserted in E) then C.

Right Mitten:

With Size 2 needles, start Chart C on line 1. Follow Chart C for 27 sts, PM, knit 1st stitch of line 1 of Chart E. Now insert Chart D (thumb gusset) before moving on the second stitch of Chart E line 1. (This thumb gusset insertion is marked by a BLUE line on the chart.) PM then continue working from Chart E. Move on to line 2 of Chart C, then line 2 of Chart E where you add the thumb gusset stitches from Chart D between 1st and 2nd sts, then finish row 2 of Chart E. Continue working from the 3 charts in this order for 19 rows.

After 19 rows of working all charts put 19 sts of the thumb gusset on scrap yarn, and continue with Chart C and Chart E only, knitting in the round. Once you are done with the charts, use MC and knit one round plain. Now work from Chart B again, creating the ribbing for the top of the mitt. After you are done with Chart B, use MC and loosely bind off in pattern.

Thumb: place the 19 sts onto size 2 dpns. With MC, pick up one stitch from the mitten body, now you have 20 stitches on your needles.

Row 1: k all sts

Row 2: p all sts

Row 3: k all sts

Row 4: p all sts

Row 5: k all sts.

Loosely bind off all sts.

Left Mitten:

With Size 2 needles, start Chart E on line 1. Follow Chart E for 26 sts, PM, insert Chart D (thumb gusset) before moving onto the last stitch of Chart E line 1. (This thumb gusset insertion is marked by a PURPLE line on the chart.) After you do the last st of line 1 Chart E work line 1 of Chart C. Then move on to line 2 of Chart E where you add the thumb gusset stitches from Chart D between 26th and 27th sts, then finish row 2 of Chart C. Continue working from the 3 charts in this order for 19 rows.

After 19 rows of working all charts put 19 sts of the thumb gusset on scrap yarn, and continue with Chart E and Chart C only, knitting in the round. Once you are done with the charts, use MC and knit one round plain. Now work from Chart B again, creating the ribbing for the top of the mitt. After you are done with Chart B, use MC and loosely bind off in pattern.

Work left thumb same as right.

Weave in all ends and block.



Chart A

Key

- Cornmeal
- Caper
- Mist
- Serpentine
- Black
- repeat
- purl
- / insert right thumb gusset
- \ insert left thumb gusset
- / m1 right leaning
- \ m1 left leaning
- No Stitch

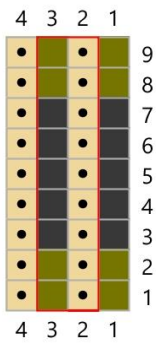


Chart B

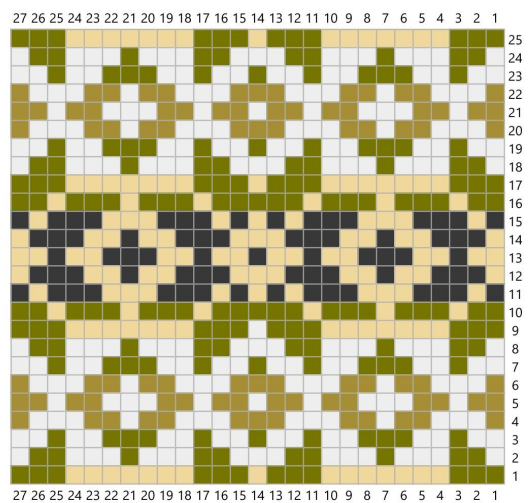


Chart C

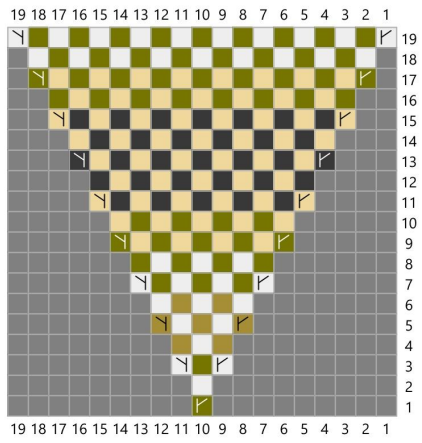


Chart D

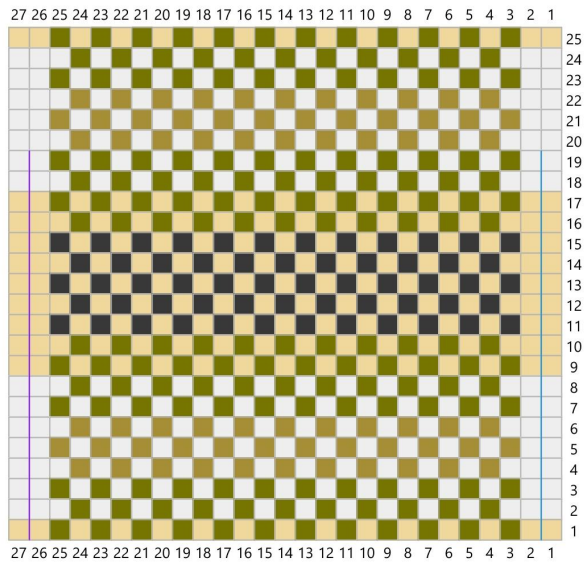


Chart E