

Longmont Hat



A charted pattern for a Fair Isle Style hat, knit with 2 colors at a time.

Materials

Knit Picks Palette (fingering weight 100% wool yarn)	
Coriander Heather (MC)	61 yds
Asphalt Heather	41 yds
Salsa Heather	11 yds
Cyan	11 yds
Finnley Heather	30 yds
Marine Heather	36 yds
Wonderland Heather	20 yds

Supplies

Size 2 - 16" circular needles, Size 3 - 16" circular needles, and Size 3 dpns.
Yarn needle. Stitch markers.

Gauge with size 3 needles in pattern, in the round: 7 sts per inch.

Instruction

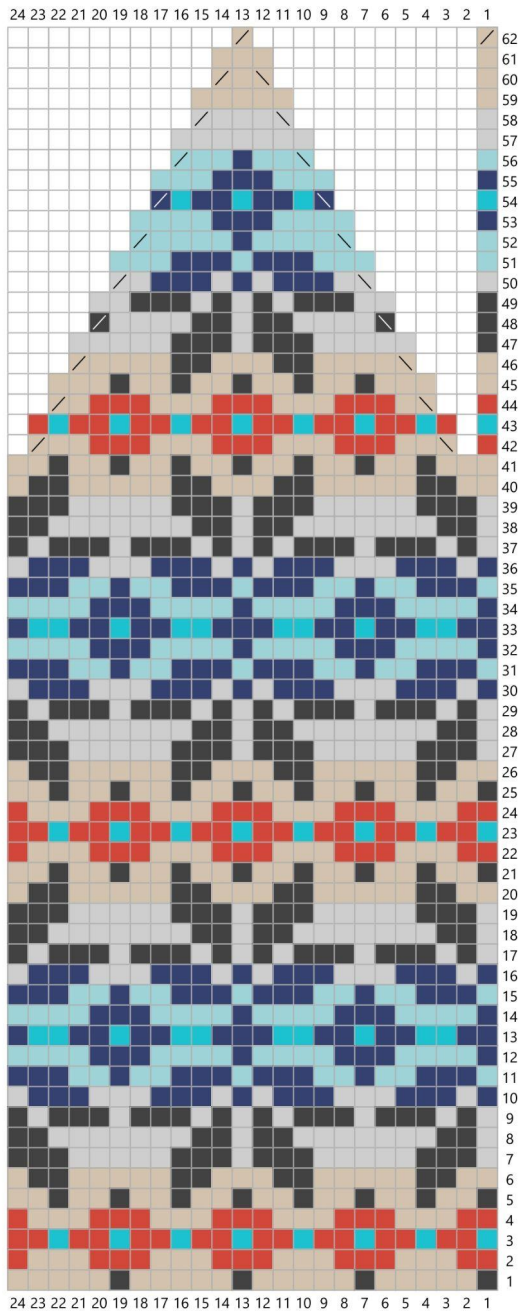
With size 2 circular needles and using MC, C.O. 144 sts. PM and join in the round.

Row 1: (k2, p2) repeat to end of round.

Repeat row 1 until ribbing measures 1 inch.

Switch to Size 3 needles and knit one round plain with MC. Start chart, repeat each row 6 times (144sts) Place markers as needed.

Work your way up the chart then use the size 3 dpns when your work does not fit on the circulars. After you finish row 62, cut an 8 inch tail. Using the yarn needle, run the tail through the last 12 sts, tie off and pull tail through to the back of the hat. Weave in all ends. Block on a head form or balloon. If using a balloon, blow it up 1 inch smaller than the head size of the person planning to wear the cap.



Key

- Coriander Heather
- Asphalt Heather
- Salsa Heather
- Cyan
- Finnley Heather
- Marine Heather
- Wonderland Heather
- no stitch
- k2tog
- ssk