

Forecast Hat



This hat fits heads that are 22-24 inches around.

Materials

Knit Picks Palette (fingering weight 100% wool yarn)

Black (MC) 80 yds

Mist 15 yds

Ash 36 yds

Sky 36 yds

Sagebrush 41 yds

Hollyberry 10 yds

Supplies

Size 1 - 16" circular needles, Size 3 - 16" circular needles, and Size 3 dpns.
Yarn needle. Stitch markers.

Gauge with size 3 needles in pattern, in the round: 7 sts per inch.

Instruction

With size 1 circular needles and using MC, C.O. 144 sts. PM and join in the round.

Row 1: (k2, p2) repeat to end of round.

Repeat row 1 until ribbing measures 1 inch.

Switch to Size 3 needles. Lativan Braid: Color A is Sky, Color B is Hollyberry.

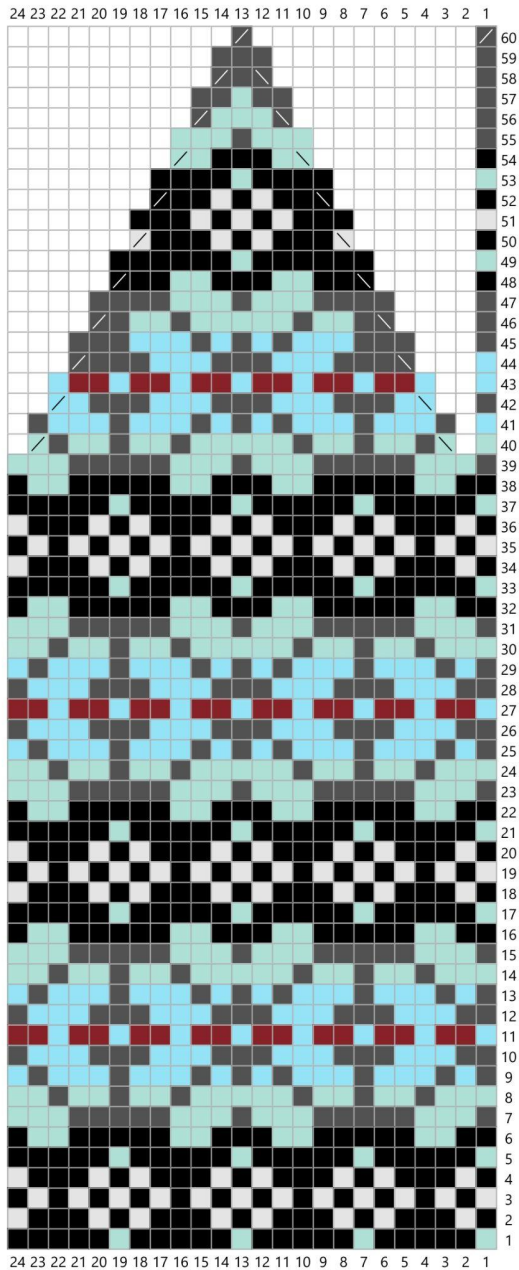
Row 1: (k 1 ColorA, k 1 ColorB) repeat to end of round.

Row 2: Move both strands to the front of the work. (All sts in rows 2 and 3 are purled over the same color as the previous row.) Starting with Color A, pull the yarn up and purl. Now using Color B, bring under the last st and purl. Alternate these two sts for the row. Your yarn will twist up. Do not try to untwist because it will naturally do so on the next row.

Row 3: Work the 1st st by pulling Color A *under* the last st and purl. (This is the only one in this row that is pulled from under the other.) Then work the next st in Color B, pull the yarn *OVER* the last st and purl. The 3rd st is also worked by pulling *OVER* the last st and purl. Continue bringing each yarn over the last and purl to the end of the row. Your yarn will untwist as you do this row. Pull the yarns to the back at the end of the row. (You will weave them in later.)

Row 4: Knit one row in MC.

Start chart, repeat each row 6 times (144sts) Place markers as needed. Work your way up the chart then use the size 3 dpns when your work does not fit on the circulars. After you finish row 60, cut an 8 inch tail. Using the yarn needle, run the tail through the last 12 sts, tie off and pull tail through to the back of the hat. Weave in all ends. Block on a head form or balloon. If using a balloon, blow it up 1 inch smaller than the head size of the person planning to wear the cap.



Key

- Mist
- Black
- Ash
- Sky
- Sagebrush
- Hollyberry
- k2tog
- ssk
- no stitch