

# Winter Wise Mittens



A charted mitten pattern for those who love stranded knitting. There is no designated left or right; the front and back are the same pattern.

Finished measurements are 9 inches from edge of cuff to tip of fingers. Laying flat they measure 3 ½ inches across knuckles. Fits a medium sized hand.

---

## Materials

MC: Knit Picks Palette - Lingonberry Heather 120 yds

CC: Knit Picks Palette - White 70 yds

Latvian Braid colors:

LB1: Knit Picks Palette - Edamame 5 yds

LB2: Knit Picks Palette - Asphalt Heather 5 yds

## Needles/Gauge

Size 2 dpns, Size 1 dpns

Gauge with Size 2 needle is: 7 sts per inch in the round in pattern.

## Other Supplies

Yarn needle. Stitch markers. Scrap yarn. Tape measure.

## Instructions

Cuff: With MC, using Size 1 needles, C.O. 54 st, PM, and join in the round.

Work a 1x1 rib:

Row 1: ( k1,p1) repeat until end of round.

Repeat row 1 until the cuff measures 2 inches.

Latvian Braid:

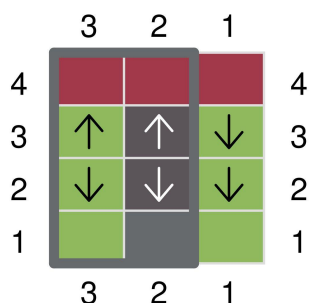
Switch to size 2 needles.

Row 1: (k 1 LB1, k 1 LB2) repeat to end of round.

Row 2: Move both strands to the front of the work. (All sts in rows 2 and 3 are purled over the same color as the previous row.) Starting with LB1, pull the yarn up and purl. Now using LB2, bring under the last st and purl. Alternate these two sts for the row. Your yarn will twist up. Do not try to untwist because it will naturally do so on the next row.

Row 3: Work the 1st st by pulling *under* the last st and purl. (This is the only one in this row that is pulled from under the other.) Then work the next st in LB2, pull the yarn *OVER* the last st and purl. The 3rd st is also worked by puller *OVER* the last st and purl. Continue bringing each yarn over the last and purl to the end of the row. Your yarn will untwist as you do this row. Pull the yarns to the back at the end of the row. (You will weave them in later.)

Row 4: Knit one row in MC.



This chart will help you understand. Work 1st st then repeat row 2 and 3 to end of row.

Mitten body and gusset:

Using Size 2 needles start Chart A, work row 1 once (27 sts), then work row 1 of Chart B (1 st), then Row 1 of chart A again (27 sts). Carry on to row 2 in the same fashion: knit Chart A once, then Chart B, then Chart A one more time for each round. Continue knitting from the two charts until you have 19 sts on the thumb gusset. On line 20 put the thumb gusset sts on scrap yarn. Continue knitting in the round until you have finished Chart A.

Put the first 7 stitches on one needle and the other 7 sts on another needle and finish with a kitchener stitch.

Thumb: place the 19 sts onto the Size 2 dpns, PM. Work from Chart B starting at row 20 by picking up a stitch and then continuing in the round (20 sts). After you have completed Chart B you will close the thumb:

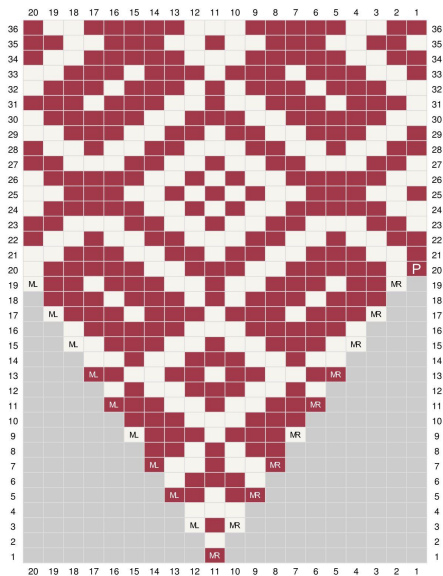
Last row: k2tog all around. Pull the last 10 sts through on a yarn needle, tie off, and pull yarn to the inside of the thumb.

Knit the second mitten the same as the first. Once you have completed both mittens, weave in all the ends and block.

### Chart A



### Chart B



- k - Lingonberry Heather
- k - White
- k - Edamame
- ↓ with the yarn in the front, bring under the last st and purl - Edamame
- ↑ with the yarn in the front, bring over the last st and purl - Edamame
- k - Asphalt Heather
- ↓ with the yarn in the front, bring under the last st and purl - Asphalt Heather
- ↑ with the yarn in the front, bring over the last st and purl - Asphalt Heather
- MR Make 1 Right - White
- ML Make 1 Left - White
- MR Make 1 Right - Lingonberry Heather
- ML Make 1 Left - Lingonberry Heather
- P Pick up st - Lingonberry Heather
- / SSK - Lingonberry Heather
- / k2tog - Lingonberry Heather
- no stitch

